

**MENDOTA RC FLEET: UPDATED 10/7/2015**  
 (Update at least Annually in August)

Boat	Type & Mfc Year	Boat Weight Range ("range" means avg weight of ALL rowers in boat)												PLAN THROUGH 2025	ACTION YEAR						
		Rower, lbs	120	130	140	150	160	170	180	190	200	210	220								
Dr. Tom Breunig (heavyweight)	4x/- (2008)																		Keep	Purchased from Hudson 2015	
Rodney S. Pratt (midweight)	8+ (2006 V1)																			Keep	Purchased from Vespoli 2015
Hexe (light-midweight)	4+ (1997)																			Keep	Evaluate Annually, August 2016 (Use as novice boat 2015+, Retires 2025)
Fourmidable (light-midweight)	4+ (2006)																			Keep	Evaluate Annually, August 2016 (Replace/Sell/use as Novice/LTR in 2023; Retire 2030)
Halapeno (heavyweight)	4+ (2005)																			Keep	Evaluate Annually, August 2016 (2030)
Schoop (heavyweight)	4+ (2009)																			Keep	Evaluate Annually, August 2016 (2035)
Borch (heavyweight)	4+ (1992)																			Sell	<b>NOW</b>
CTF (midweight)	4+ (1992)																			Sell	<b>2017</b>
Pangea (heavyweight)	8+ (2009)																			Keep	Evaluate Annually, August 2016 (Retires 2034)

\*Overview generated 9/19/2015 by Nancy Jarvis, Elsa Korol, Allison Markoski, Sarah Specht, Erica Macke, Danielle Scodellaro, with contributions from Casey O'Keefe's archives. Hereinafter, boats will be classified by weight.

**MENDOTA RC FLEET: UPDATED 10/7/2015**  
 (Update at least Annually in August)

Alice (light-midweight)	8+ (2009)																									Keep	Evaluate Annually, August 2016 (Retires 2034)	
Carolina (midweight)	8+ (1998)																										Keep	Evaluate Annually, August 2016 (Retires 2020-2025)
Unrepentent (heavyweight)	8+ (1989)																										Keep as LTR/Novice Boat	Evaluate Annually, August 2016 (Retires 2019)
MRC (heavyweight)	8+ (1988)																										Replace with Pratt 8+, use as planter in spring	<b>Retiring</b>
Victory (midweight)	8+ (2000)																										Keep	Evaluate Annually, August 2016 (Retires 2030)
Jim Martyn (heavyweight)	2x (2009)																										Keep	Evaluate Annually, August 2016 (Retires 2039)
GoldFire (midweight)	2x (2009)																										Keep	Evaluate Annually, August 2016 (Retires 2039)
Pratt (heavyweight)	2x/- (1990)																										Sell	<b>NOW</b>
Uncle George (heavyweight)	2x																										Sell	<b>Fall 2016</b>
Legacy	1x																										Keep	Evaluate Annually, August 2016
Jevon	1x																										Keep	Evaluate Annually, August 2016
Ginger	1x																										Keep	Evaluate Annually, August 2016
Monona	1x																										Sell	<b>NOW</b>
	<b>Rower, lbs</b>	<b>120</b>	<b>130</b>	<b>140</b>	<b>150</b>	<b>160</b>	<b>170</b>	<b>180</b>	<b>190</b>	<b>200</b>	<b>210</b>	<b>220</b>																

\*Overview generated 9/19/2015 by Nancy Jarvis, Elsa Korol, Allison Markoski, Sarah Specht, Erica Macke, Danielle Scodellaro, with contributions from Casey O'Keefe's archives. Hereinafter, boats will be classified by weight.

Boat	type	year	Hull size	model	mfg
Dr. Tom Breunig	4+/-	2008	Heavy weight (180-225)	Hammerhead Elite	Hudson
Rodney S. Pratt	8+	2006	EM8+ (M = 150-185lbs)	V1	Vespoli
Alice	8+	2009	M = ES8 (125-165lbs)	ultralight side mount	Vespoli
Pangea	8+	2009	K = EL8 (175-205lbs)		Vespoli
Carolina	8+	1998	midweight		Dirigo
Unrepentant MRC	8+	1989	Heavy weight		Vespoli
		1988	Heavy weight		Vespoli
Schoop	4+	2009	U = EM4+(160-185lbs)	bow coxed	Vespoli
Halapeno	4+	2005	E = DL4+ (185-220)	Stern cox	Vespoli
Borcherding	4+	1992	heavy weight	stern coxed	Dirigo
Fourmidable	4+	2006	ES4, midweight (135-165)	bow coxed "ultralight"	Vespoli
CTF	4+	1992	midweight	stern coxed	Dirigo
Hexe Bose	4+	1997	DS4+('96) (135-165)	stern coxed	Vespoli
Victory	4X	2000	Midweight (150-190 lbs)	"Quad racing shell (Custom 30)"	Kaschper
Jim Martyn	2x	2009	R = M33 (180-220)		Vespoli
GoldFire	2x	2009	Q = M31 (145-180)		Vespoli
Pratt (Em)	2+/2X	1990	heavy weight (180-220 lbs)	HC="racer", laminated hull	Vespoli
Uncle George	2X	1987	Heavyweight		Vespoli
Legacy	1X	2009	optimal 185. Range = 155-215lbs		Peinert
Jevon	1X	2009	optimal 185. Range = 155-215lbs		Peinert
Monona	1X		riggers made by Casey O'Keefe		Murphy racing
Ginger	1x				Julian
Fred	1x				Julian

**MendotaRC Fleet Plan  
2015-2025**

**MENDOTARC FLEET PLAN 2015-2025**

Note: We want to be aggressive on the boat plan and put priority on the equipment fund.

Note: This document is intended to be the start of a living document. Recommended that the Fleet Plan should be updated and reevaluated annually, each August, to reflect goals met, evaluate fleet, and plan for the next 10 years to ensure a safe and high quality fleet. This allows for extremely targeted and responsible fiscal management for buying, selling, and maintaining our fleet. Top racing boats should be replaced 10-15 years from manufacturing date and those become Novice/LTR/sold depending on club needs.

<b>YEAR</b>	<b>AMOUNT &amp; FUND</b>	<b>FUNCTION</b>	<b>REASONING</b>
<b>2015</b>			
Buy Mid-Heavyweight 8+ from Vespoli (goal: used M2)	\$11,000 (Pratt Fund \$8600 & use portion of \$5000 transferred by BOD July 2015 into Equipment fund; potentially grants, name after Rodney Pratt)	Replaces MRC Deposit in Equipment Fund	Fleet Planning Committee determined MRC should be retired 9/19/2015), Furthers the spirit of the Pratt fund (name boat after Rodney Pratt)
Sell Pratt	\$800-1000	Deposit in Equipment Fund	This money earmarked for new single and double in 2016.
Sell Borcherding	\$2000 (on the high end)	Deposit in Equipment Fund	This money earmarked for new single and double in 2016.
Sell Fred	\$500	Deposit in Equipment Fund	This money earmarked for new single and double in 2016.

Developed 9/19/2015 by Nancy Jarvis, Elsa Korol, Sarah Specht, Erica Macke, Danielle Scodellaro, and Allison Markoski using Casey O'Keefe's archives, including previous Fleet Plans, current and past boat usage data, and current market trends.

**MendotaRC Fleet Plan  
2015-2025**

**FUNDRAISING**

Rolls over into  
2016 with Buy-A-  
Seat Campaign

Allison to set up Go  
Fund Me and Post in  
Boathouse

Coffee through Colectivo	\$3000-\$6000	Deposit in Equipment Fund	50 members to sell 10-20 bags
End of year push for fundraising		Deposit in Equipment Fund	Annually from Club President
Wine Roulette at Annual Club Celebration	\$15 to play x 10 = \$150	Deposit in Equipment Fund	Annually at Club Celebration
Annual Buy-A-Seat Campaign	For Dr. Tom Breunig and Rodney S. Pratt boats: \$250 per seat	Deposit in Equipment Fund	Your name is put on the seat you buy in the new boats, fundraising for 2016 single, double
Annual VIP Erg Campaign	\$100 x 16 = \$1600	Deposit in Equipment Fund	Your name is put on the erg, you get priority for that erg for the entire year.
Marathon Aid Station	\$525	Deposit in Equipment Fund	
Sell Pratt	\$800-1000	Deposit in Equipment Fund	This money earmarked for new single and double in 2016.
Sell Borcharding	\$2000 (on the high end)	Deposit in Equipment Fund	This money earmarked for new single and double in 2016.
Sell Fred	\$500	Deposit in Equipment Fund	This money earmarked for new single and double in 2016.

**YEAR                      AMOUNT & FUND      Function                      Reasoning**

<b>2016</b>	\$20,000		
Hoist for third launch	\$1000 (Equipment)	For third launch	Club is growing and for safety, we need 3 working launches at all times. This was the next item on the 2014 fleet plan.
Second gangplank Suzuki motor replacement	\$200 (Equipment) \$5000-6,000	For third launch	We have 1 currently. This accompanies the hoist. It's unreliable and at a point where we're not getting value for input of maintenance. Better value to sell and buy a replacement.

Developed 9/19/2015 by Nancy Jarvis, Elsa Korol, Sarah Specht, Erica Macke, Danielle Scodellaro, and Allison Markoski using Casey O'Keefe's archives, including previous Fleet Plans, current and past boat usage data, and current market trends.

**MendotaRC Fleet Plan  
2015-2025**

Sell Suzuki	NANCY can price	Deposit in Equipment Fund	See above
Buy Pienert LW Single from Craftsbury with oars	\$4,000	Equipment Fund	This was in the 2014 fleet plan.
Buy midweight 2x/2- from Hudson or Vespoli	\$12,000	Equipment Fund Deposit into	Companion to Goldfire - highest used boat. This was in the 2014 fleet plan.
Sell Uncle George	\$1,000	Equipment Fund	Earmarked for new 4+ in 2018

**FUNDRAISING GOALS for 2016**

	Dr. Tom Breunig, Rodney S. Pratt, new double, new single; \$250 per seat and TBD pricing for naming rights for double and single	Deposit into Equipment Fund	Earmarked for midweight 4+ in 2018
Annual Buy-A-Seat Campaign		Deposit into Equipment Fund	Earmarked for midweight 4+ in 2018
Annual VIP Erg Campaign	\$100 per erg x 16 = \$1600	Equipment Fund Deposit into	Earmarked for midweight 4+ in 2018
Colectivo Coffee	\$3000-\$6000	Equipment Fund	Earmarked for midweight 4+ in 2018
Volunteer Hour Opt- Out	TBD	Equipment Fund Deposit in	You may opt out of your volunteer hours for the year by donating \$200 to the club. Earmarked for midweight 4+ in 2018.
Silent Auction	TBD	Equipment Fund Deposit in	Members donate baskets. Earmarked for midweight 4+ in 2018.
Wine Roulette		Equipment Fund	Earmarked for midweight 4+ in 2018
Corporate LTR Days Cooper's Dining Fundraising Night			Allison knows co-owner of Cooper's and can set this up. Portion of the night's profits go directly to MRC.
Marathon stations Title IX Shopping Fundraiser			Allison's friend works at Title IX and has hosted these successfully for a Masters Rowing Club in Portland (Station L)

Developed 9/19/2015 by Nancy Jarvis, Elsa Korol, Sarah Specht, Erica Macke, Danielle Scodellaro, and Allison Markoski using Casey O'Keefe's archives, including previous Fleet Plans, current and past boat usage data, and current market trends.

**MendotaRC Fleet Plan  
2015-2025**

<b>2017</b>	<b>FUNDRAISING &amp; MAINTENANCE YEAR</b>	<b>EARMARK FOR MIDWEIGHT 4+ PURCHASE in 2018</b>
Buy BAT technology for Dr. Tom Breunig and other highest used boats based on data	\$2,000 Equipment Fund	Upgraded shoes for better performance and enhanced technology. Allows coaches better help rowers improve at all levels. Coachces determine which models are best based on club member needs. Do not need Board vote to purchase these.
Buy Speed Coaches	\$1,500 Equipment Fund	Earmarked for replacement with a midweight 4+ in 2018
Sell CTF	Nancy help price. Equipment Fund	
Annual Buy-A-Seat Campaign	for new 4+ in 2018; 8+ for 2020	
Annual VIP Erg Campaign	\$100 x 16 = \$1600	
Colectivo Coffee	\$3000-\$6000	
Volunteer Hour Opt-Out	\$300 per person	
Silent Auction	TBD	
Wine Roulette	TBD	
Corporate LTR Days	\$2000 per day	
Cooper's Dining Fundraising Night		Allison knows co-owner of Cooper's and can set this up. Portion of the night's profits go directly to MRC.
Marathon stations		
Title IX Shopping Date		
 <b>2018</b>		
Buy or new used midweight racing 4+ from Hudson or Vespoli (likely Hudson)	\$20,000	Not easy to find used mid-weight 4+'s; however, colleges moving to Hudson boats, and Hudson refurbes all their boats they buy back. If not Hudson, go with Vespoli, who also refurbes. This is to replace CTF.

Developed 9/19/2015 by Nancy Jarvis, Elsa Korol, Sarah Specht, Erica Macke, Danielle Scodellaro, and Allison Markoski using Casey O'Keefe's archives, including previous Fleet Plans, current and past boat usage data, and current market trends.

**MendotaRC Fleet Plan  
2015-2025**

**FUNDRAISING**

Annual Buy-A-Seat  
Campaign with push  
for general  
donations for

MIDWEIGHT RACING 8+ in 2020 For midweight racing  
8+ for 2020

Needed to supplement the fleet of Pangea (heavy) and Alice (smaller end of midweight) to meet majority of our members' needs.

Annual VIP Erg  
Campaign

\$100 x 16 = \$1600

Colectivo Coffee

\$3000-\$6000

Volunteer Hour Opt-  
Out

TBD

Silent Auction

TBD

Wine Roulette

TBD

in coordination with  
Annual Buy A Seat:  
asking for donations  
for midweight racing

MAJOR END OF  
YEAR LETTER PUSH

8+

Corporate LTR Days

Cooper's Dining

Fundraising Night

Marathon stations

Title IX Shopping Date

Allison knows co-owner of Cooper's and can set this up. Portion of the night's profits go directly to MRC.

**FUNDRAISING &  
MAINTENANCE  
YEAR**

**2019**

Annual Buy-A-Seat  
Campaign with push  
for general  
donations for

MIDWEIGHT RACING 8+ in 2020 Midweight racing 8+  
for 2020

Needed to supplement the fleet of Pangea (heavy) and Alice (smaller end of midweight) to meet majority of our members' needs.

Developed 9/19/2015 by Nancy Jarvis, Elsa Korol, Sarah Specht, Erica Macke, Danielle Scodellaro, and Allison Markoski using Casey O'Keefe's archives, including previous Fleet Plans, current and past boat usage data, and current market trends.



## MendotaRC Fleet Plan 2015-2025

Annual VIP Erg  
Campaign \$100 x 16 = \$1600  
Colectivo Coffee \$3000-\$6000  
Volunteer Hour Opt-  
Out TBD  
Silent Auction TBD  
Wine Roulette TBD  
in coordination with  
Annual Buy A Seat:  
asking for donations  
for midweight racing  
MAJOR END OF  
YEAR LETTER PUSH 8+  
Corporate LTR Days  
Cooper's Dining  
Fundraising Night  
Marathon stations  
Title IX Shopping Date

Allison knows co-owner of Cooper's and can set this up. Portion of the night's profits go directly to MRC.

### 2020

Buy midweight  
racing 8+ from  
Hudson (Vespoli  
back up)

Colleges moving to Hudson boats, and Hudson refurbishes all their boats they buy back. If not Hudson, go with Vespoli, who also refurbishes. This is to replace Borcharding

### FUNDRAISING

Annual Buy-A-Seat Campaign Start push for lightweight 4+ in 2022  
Annual VIP Erg Campaign \$100 x 16 = \$1600  
Colectivo Coffee \$3000-\$6000  
Volunteer Hour Opt-  
Out TBD  
Silent Auction TBD

We need something smaller than Hal, a lightweight/small 4+

Developed 9/19/2015 by Nancy Jarvis, Elsa Korol, Sarah Specht, Erica Macke, Danielle Scodellaro, and Allison Markoski using Casey O'Keefe's archives, including previous Fleet Plans, current and past boat usage data, and current market trends.

**MendotaRC Fleet Plan  
2015-2025**

Wine Roulette           TBD  
 MAJOR END OF  
 YEAR LETTER PUSH  
 Corporate LTR Days  
 Cooper's Dining  
 Fundraising Night  
 Marathon stations  
 Title IX Shopping Date

Allison knows co-owner of Cooper's and can set this up. Portion of the night's profits go directly to MRC.

**FUNDRAISING  
AND  
MAINTENANCE  
YEAR**

**2021**

Annual Buy-A-Seat    Push for lightweight  
 Campaign            4+ in 2022  
 Annual VIP Erg  
 Campaign            \$100 x 16 = \$1600  
 Colectivo Coffee    \$3000-\$6000  
 Volunteer Hour Opt-  
 Out                    TBD  
 Silent Auction        TBD  
 Wine Roulette        TBD

MAJOR END OF  
 YEAR LETTER PUSH  
 Corporate LTR Days  
 Cooper's Dining  
 Fundraising Night  
 Marathon stations  
 Title IX Shopping Date

Allison knows co-owner of Cooper's and can set this up. Portion of the night's profits go directly to MRC.

**2022**

**MendotaRC Fleet Plan  
2015-2025**

Buy  
Lightweight/Small  
4+ from Hudson  
(Vespoli back up)

Colleges moving to Hudson boats, and Hudson refurbishes all their boats they buy back. If not Hudson, go with Vespoli, who also refurbishes. This is to replace Borcharding

**FUNDRAISING**

Annual Buy-A-Seat Campaign  
Annual VIP Erg Campaign  
Colectivo Coffee  
Volunteer Hour Opt-Out  
Silent Auction  
Wine Roulette  
MAJOR END OF YEAR LETTER PUSH  
Corporate LTR Days  
Cooper's Dining Fundraising Night  
Marathon stations  
Title IX Shopping Date

BEGIN PUSH FOR  
50th ANNIVERSARY  
RACING 8+ BRAND  
NEW AND DOCK  
REPLACEMENT

\$100 x 16 = \$1600  
\$3000-\$6000

TBD  
TBD  
TBD

Allison knows co-owner of Cooper's and can set this up. Portion of the night's profits go directly to MRC.

**2023 FUNDRAISING YEAR**

Annual Buy-A-Seat Campaign

PUSH FOR 50th  
ANNIVERSARY  
RACING 8+ BRAND  
NEW and NEW DOCK

Developed 9/19/2015 by Nancy Jarvis, Elsa Korol, Sarah Specht, Erica Macke, Danielle Scodellaro, and Allison Markoski using Casey O'Keefe's archives, including previous Fleet Plans, current and past boat usage data, and current market trends.

**MendotaRC Fleet Plan  
2015-2025**

Annual VIP Erg  
 Campaign \$100 x 16 = \$1600  
 Colectivo Coffee \$3000-\$6000  
 Volunteer Hour Opt-  
 Out TBD  
 Silent Auction TBD  
 Wine Roulette TBD  
 MAJOR END OF  
 YEAR LETTER PUSH  
 Corporate LTR Days  
 Cooper's Dining  
 Fundraising Night  
 Marathon stations  
 Title IX Shopping Date

Allison knows co-owner of Cooper's and can set this up. Portion of the night's profits go directly to MRC.

**2024 FUNDRAISING YEAR**

PUSH FOR 50th  
 ANNIVERSARY  
 Annual Buy-A-Seat RACING 8+ BRAND  
 Campaign NEW  
 Annual VIP Erg  
 Campaign \$100 x 16 = \$1600  
 Colectivo Coffee \$3000-\$6000  
 Volunteer Hour Opt-  
 Out TBD  
 Silent Auction TBD  
 Wine Roulette TBD  
 MAJOR END OF  
 YEAR LETTER PUSH  
 Corporate LTR Days  
 Cooper's Dining  
 Fundraising Night  
 Marathon stations  
 Title IX Shopping Date

Allison knows co-owner of Cooper's and can set this up. Portion of the night's profits go directly to MRC.

**MendotaRC Fleet Plan  
2015-2025**

**2025**

50th ANNIVERSARY

BRAND NEW  
RACING 8+  
(Hudson or  
Vespoli)

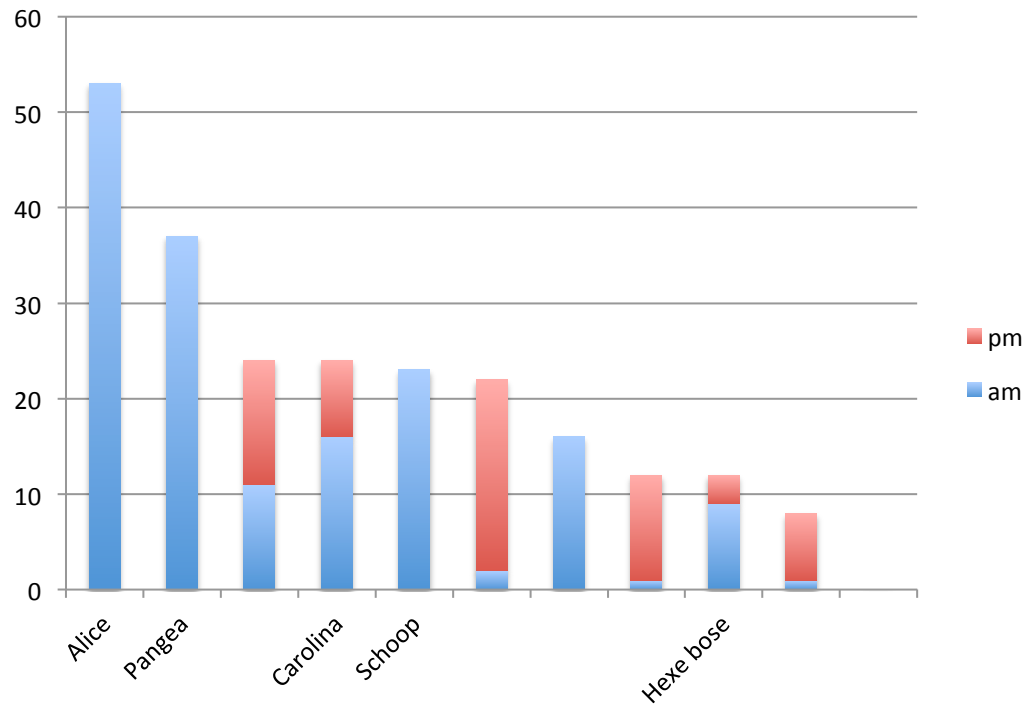
DOCK REPLACEMENT

	am	pm	total	
Alice		53	0	53
Legacy		49	2	51
GoldFire		43	4	47
Pangea		37	0	37
Jevon		33	1	34
Victory		28	1	29
Hal		11	13	24
Carolina		16	8	24
Schoop		23	0	23
Jim Martyn		23	0	23
MRC		2	20	22
Fourmidable		16	0	16
Ginger		15	0	15
Borcherding		1	11	12
Hexe bose		9	3	12
Unrepentant		1	7	8
Uncle George		4	1	5
Monona		3	0	3
Pratt		3	0	3
CTF		0	0	0

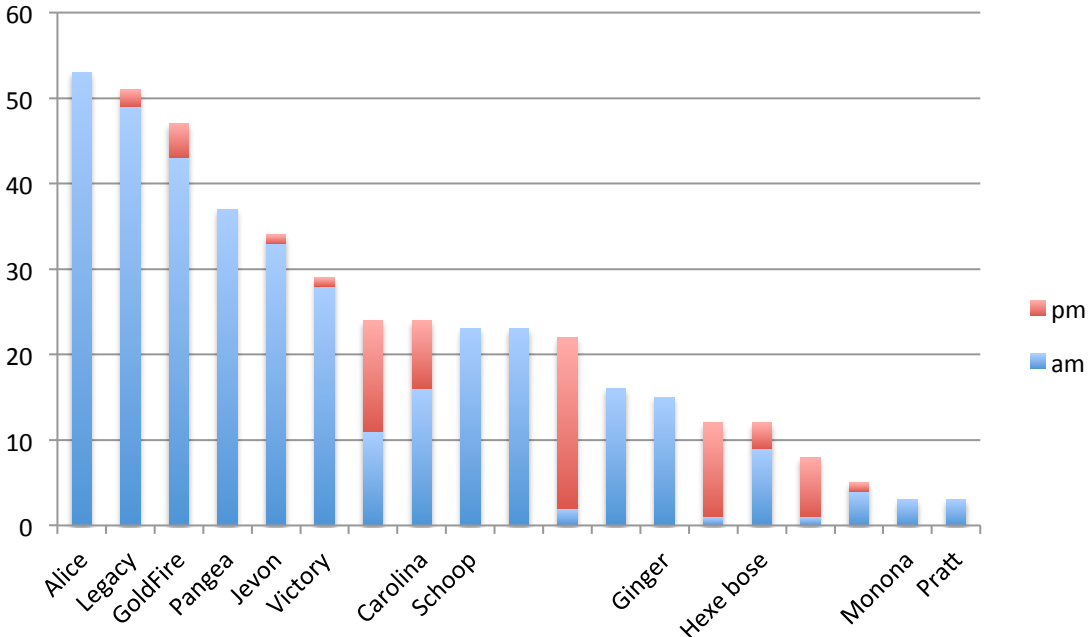
<b>Sweep boats</b>	am	pm	total	
Alice		53	0	53
Pangea		37	0	37
Hal		11	13	24
Carolina		16	8	24
Schoop		23	0	23
MRC		2	20	22
Fourmidable		16	0	16
Borcherding		1	11	12
Hexe bose		9	3	12
Unrepentant		1	7	8
CTF		0	0	0

<b>Sculling boat</b>	am	pm	total	
Legacy		49	2	51
GoldFire		43	4	47
Jevon		33	1	34
Victory		28	1	29
Jim Martyn		23	0	23
Ginger		15	0	15
Uncle George		4	1	5
Pratt		3	0	3
Monona		3	0	3

## Sweep Boat Usage 4/15-9/9/15



# MRC Boat Usage, 4/15-9/9/15





## Sculling Boat Usage, 4/15-9/9/15

